



AUTO DARKENING WELDING HELMET INSTRUCTION MANUAL



WH8912

V1 - 02092013



INDEPENDENT WHOLESALE WELDING SUPPLY

Ph: 02 8834 2400 Fax: 02 8834 2498 Email: iwvs@iwvs.net Website: www.iwvs.net





WARNING

Read and understand all instructions before using!

JS8912 Welding helmets are designed to protect the eyes and face from sparks, spatter, and harmful radiation under normal welding conditions. They will not protect against severe impact hazards, including fragmenting grinding disks and they must never be used for grinding.

This helmet will never protect against explosive devices or corrosive liquids. Machine guards or eye splash protection must be used when these hazards are present.

Impact resistant, primary eye protection, spectacles or goggles that meet current ANSI, must be worn at all times when using this welding helmet. Avoid work positions that could expose unprotected areas of the body to spark, spatter, direct and/or reflected radiations. Use adequate protection if exposure can not be avoided.

BEFORE WELDING

Check for light tightness before each use.

Check the front cover lens to make sure that they are clean, and that no dirt is covering the two sensors on the front of filter cartridge. Also check the front/inside cover lens and the front lens retaining frame to make sure that they are secure and clean.

Inspect all operating parts before each use for signs of wear or damage. Any scratched, cracked, or pitted parts should be replaced immediately.

Do not make any modifications to either the welding lens or helmet, other than those specified in this manual. Do not use any replacement parts other than those specified in this manual.

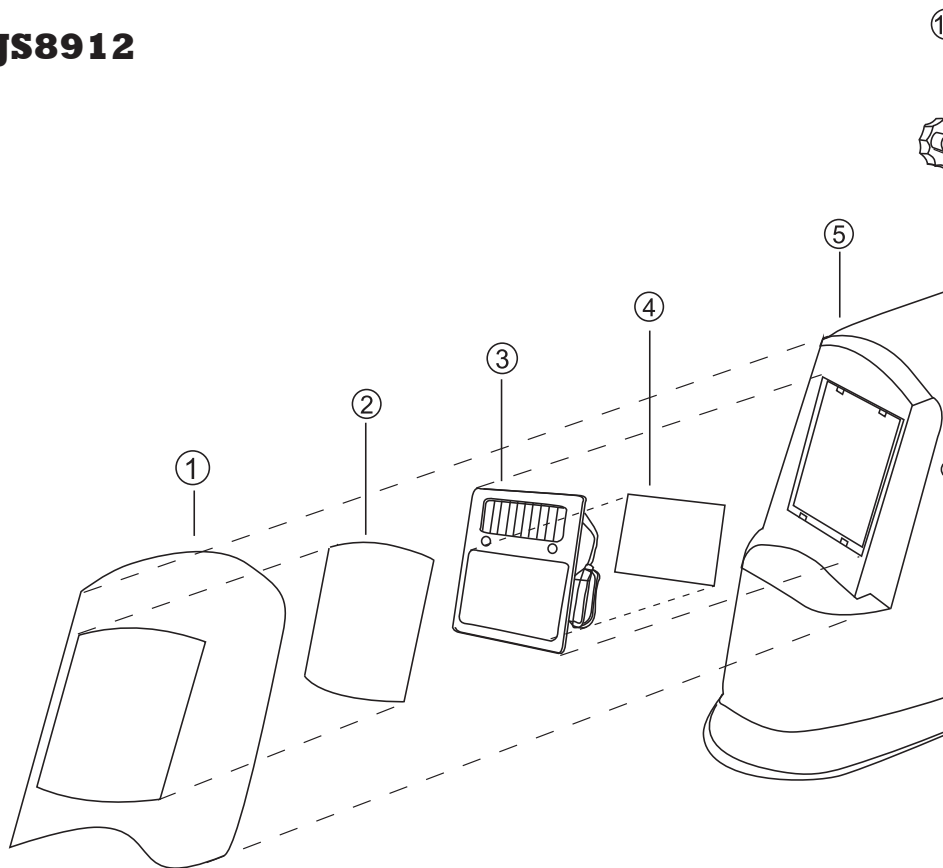
Unauthorized modifications and replacement parts will void the warranty and expose the user to the risk of personal injury.

Select the shade number you require at the turn of a shade knob. Finally be sure that the shade number is the correct setting for your application.

Adjust headband so that the helmet is seated as low as possible on the head and close to your face. Adjust helmet's incline angle by turning the adjustable angle bracket.

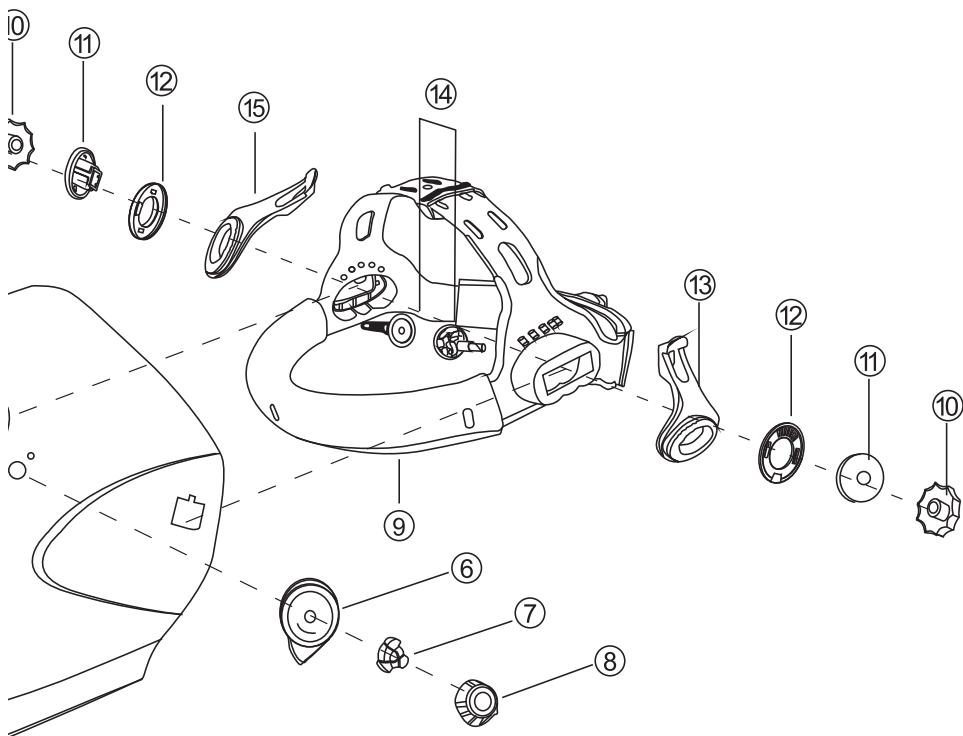
Failure to follow these warnings and/or failure to follow all of the operating instructions could result in severe personal injury.

JS8912



- 1. Front lens retaining cover
- 2. Front protection plate
- 3. Auto - darkening lens cartridge
- 4. Rear protection plate

- 5. Helmet shell
- 6. Shade indicator
- 7. Shade indicator fastener
- 8. Shade adjusting knob



- 9. Head gear set
- 10. Headband adjusting nut
- 11. Outside square washer
- 12. Inside square washer

- 13. Left adjustable angle bracket
- 14. Angle adjusting shaft
- 15. Right adjustable angle bracket

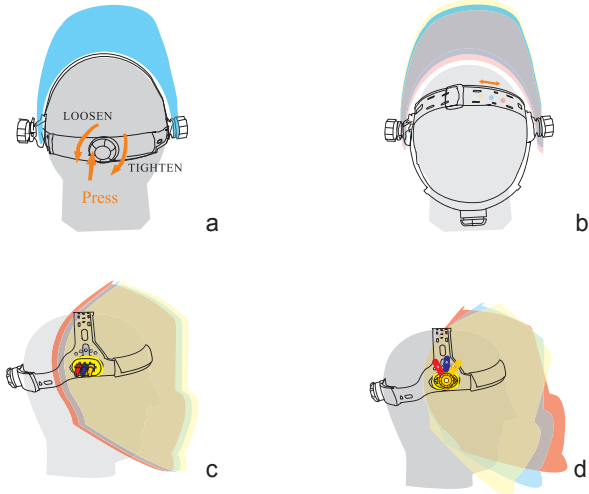
I. PRODUCT FEATURES

- This product is a completely new design, with shell material high and low temperature resistant, corrosion resistant, flame retardant, soft, light tight and durable.
- Overall - process protection against ultraviolet (UV) and infrared (IR) radiation. JS8912 is equipped with lithium battery and solar cells that extends the life of the battery.
- The product fully conforms with related ANSIZ87:1-2010 std safety standard.

II. OPERATING INSTRUCTIONS

1. Peel off the protective film inside and outside the surfaces of lens
2. Prior to welding, the filter screen is in a transparent and clear state, enabling a clear vision on work piece, at the moment of starting welding, it automatically changes the filter screen from clear to dark state. At the moment of stopping welding, the filter screen automatically changes from dark to clear state.
3. Adjust the Shade number knob according to different welding current and welding process to select proper shade number: see attached table 1.
4. Adjust the sensitivity level stop welding, adjust the sensitivity level to high till filter flashes. Adjust the sensitivity level a little lower then.
5. Adjust the delay time. Delay time features the time, the lens will turn from dark to clear state after stop welding.
6. Adjust the headgear; see attached figure 2.
 - a. Put the helmet on the head, press the adjustable knob down (at the rear head position), at the same time, rotate the knob counterclockwise to increase the circumference of the headband, or rotate the knob clockwise to decrease the circumference. See figure 2.a
 - b. Adjust the depth of the helmet to best position. See figure 2.b
 - c. Adjust the distance between the helmet and your face. See figure 2.c
 - d. Adjust the angle limitation position of the helmet. See figure 2.d

FIGURE 2



As a result of above mechanism action, the welder surely feels more comfortable than before.

III. WARNING

- JS8912 applies to all kinds of welding operations.
- The Auto darkening filter must be equipped with outside protection plate to prevent potential unreparable damage.
- Change scratched or broken lens cartridge that reduces visual field and protection level.
- Change the scratched or broken protection plate, do not bump into lens during replacement.
- Before welding, select proper shade number according to the welding process
- The operating temperature range is -5°C to 55°C (23°F to 131°F). When ambient temperature is below the lower limit, the response speed of liquid crystal materials of lens cartridge is slower, and should not be used.

- Do not store lens cartridge in a location near a heat source or in a high moisture place.
- Do not clean cartridge frame with alcohol, gasoline, or diluted solvent; and do not immerse it into water.
- Frequently change the sweatband.
- Change failure parts with the parts provided by the authorized supplier.
- Should this helmet not darken upon striking an arc, stop welding immediately and contact your dealer.

IV. MAINTENANCE

Replacing the front cover lens if it is damaged (cracked, scratched, soiled or pitted)

Step 1: Remove the front cover lens by pulling up the central part of the frame.

Step 2: Check and make sure that the frame is securely installed.

Replacing the inside cover lens if it is damaged (cracked, scratched, soiled or pitted).

TAKE OUT THE FRAME



ASSEMBLE THE FRAME



-
- Clean the cover lens with a clean lint - free tissue or cloth with residential glass detergent. Do not immerse the lens in water or other liquid. Never use abrasives, solvent, oil or diluted detergent.
 - Use neutral detergent to clean headband
 - Never directly strike lens
 - Don't remove the auto darkening filter from the helmet. Never try to open the filter.

V. TECHNICAL SPECIFICATIONS

Battery: Lithium & Solar Combination (Min. Lifetime: 5,000 Welding hours)

Operation temperature: -5°C to 55°C (23°F to 131°F)

Cartridge Size: 110 x 90 x 8 mm (4-1/3" x 3-5/9" x 1/3")

View Size: 100 x 67 mm (39-3/8" x 26-3/8")

Light Shade Number: 4

Dark Shade Number: 9-13

UV/IR Protection: Up to DIN 16

Time from Light to Dark: 1/25000s

Delay Time (from dark to light): Adjustable 0.15 - 0.8s

Sensitivity: Adjustable Stepless

Warranty: 2 years

Weight: 490g (1.08 Pound)

Material of helmet: Nylon

Available colour: Orange

Severe personal injury could occur if the user fails to follow the aforementioned warnings, and/or fails to follow the operating instructions.

COMMON PROBLEMS AND REMEDIES

- **Auto Darkening filter does not darken or flickers**

Front cover lens is soiled or damaged (change lens cover)

Sensors are soiled (clean the sensor's surface)

Welding current is too low (adjust sensitivity to high, by switching to the "HI" position)

- **Slow response**

Operating temperature is too low (do not use at temperatures below -5°C (23°F)).

- **Poor vision**

Front/Inside cover lens and/or filter lens are soiled (change lens).

There is insufficient ambient light

Shade number is incorrectly set (reset the shade number)

- **Welding helmet slips**

Headband is not adjusted properly (readjust headband)

WARNING! Operator must stop using the auto darkening filter welding helmet immediately if the above mentioned problems cannot be correct. Contact your dealer.

NOTE: All specifications and technical data are subject to change without prior notification.

Attached Table 1

Recommended Shade Number According to BS679 and EN169

Welding Process	Arc Current(Amperes)																						
	0.5	1	2.5	5	10	15	20	30	40	60	80	100	125	150	175	200	225	250	275	300	350	400	450
SMAW	9							10	11				12			13		14					
MIG(heavy)	10								11			12			13		14						
MIG(Light)	10								11			12	13		14		15						
TIG,GTAW	9				10	11			12		13		14										
MAG/CO ₂	10							11	12	13			14		15								
SAW	10										11	12	13	14	15								
PAC	11								12			13											
PAW	2.5	3	4	5	6	7	8	9	10	11	12	13			14		15						

Adopt greater or smaller shade number pursuant to the field condition