



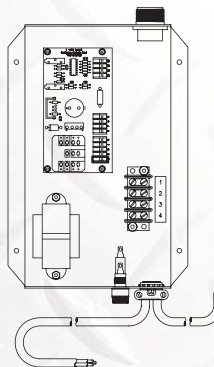
SOLID STATE SPOOL GUN & CONTROL

Designed for constant voltage power sources.

- One motor for .030 through 1/16" aluminium and 0.23 through .045 hard wires.
- No more changing motor ratio's
- No more rheostat to get hot or burn out.
- 30 to 800 inch per minute capability
- Solid state control provides: true constant speed, higher motor torque, longer motor life and smoother wire feeding.



Input Power	Weld Output Rating Argon or Helium	Wire Capacity	Wire Speed Range	Dimensions	Weight Gun & Cables
115VAC 50/60Hz.	250 Amps 50% Duty cycle	.023 in. through 1/16" aluminium or .023 in. through .045 hard wire	30IPM to 800IPM	Height 209.5 mm Width 76.2 mm Length 381 mm	Net 11.79 kg Ship 13.15 kg
					4C Control
					Net 3.4 kg Ship 4.08 kg



Part No	Description
AEC200-4	Spool gun w/ 50' cable assembly for use w/ AEC200-4C Solid state control box

Part No	Description
AEC200-4C	Solid state control box for use with AEC200-4 Spool gun