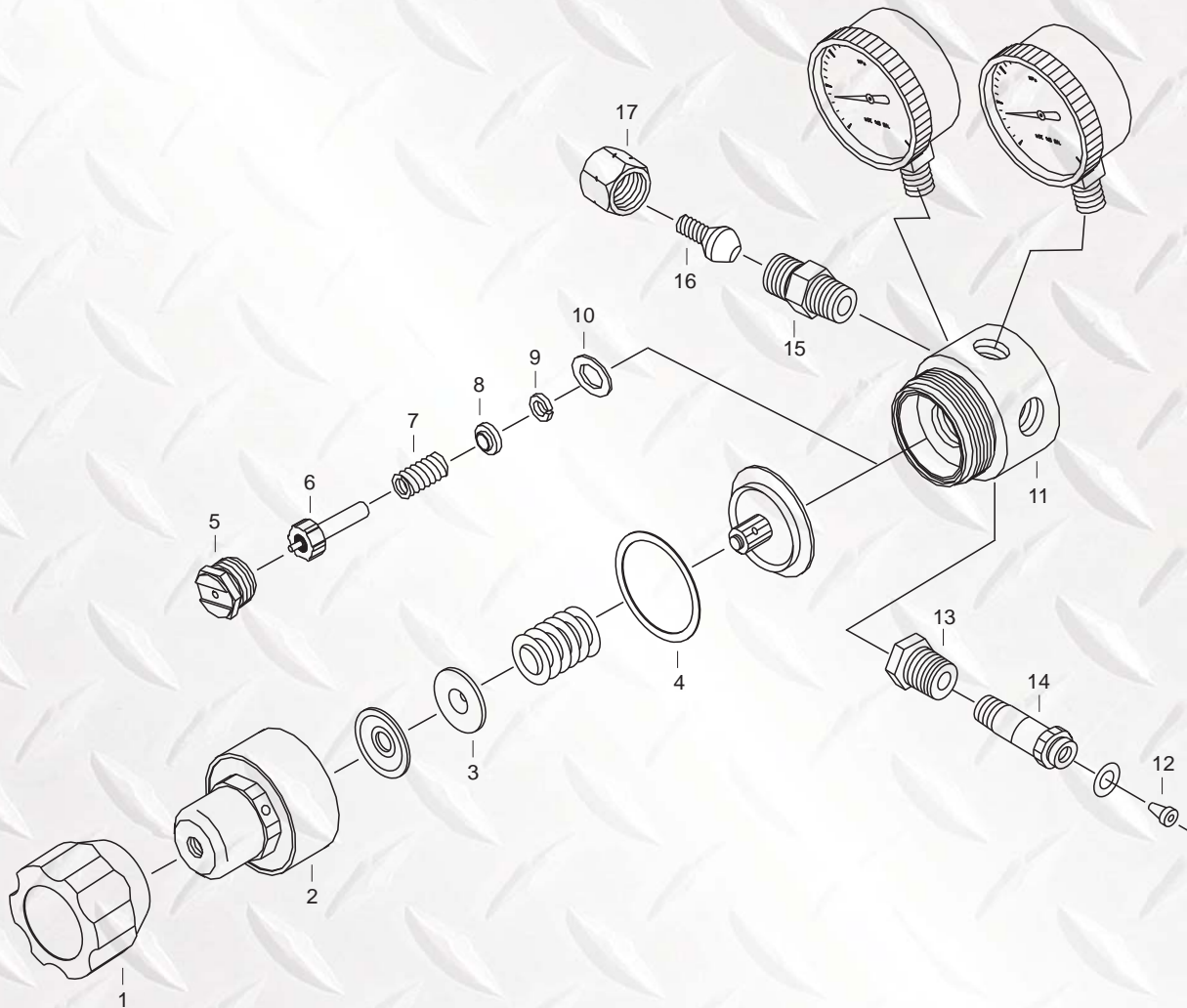


# GAS EQUIPMENT

## 190AR ARGON REGULATOR



Part No	Description
1	R190-01 KNOB 210IB
2	R190-04 HOUSING CAP
3	R110-06 SPRING BUTTON
4	R110-08 SLIP RING
5	R110-30 NOZZLE
6	R120-83 SEAT ASSEMBLY
7	R110-35 VALVE SPRING
8	R110-36 GLAND
9	R110-37 FRICTION WASHER

Part No	Description
10	R110-38 NOZZLE GASKET
11	R190-50C BODY
12	R570-66 NIPPLE O'RING
13	R120-54B INLET NUT
14	R230-55 SPIGOT
15	R190-52C OUTLET CONNECTION
16	53N10A HOSE NIPPLE
17	NBU2018R FLOWMETER NUT Y3902 REGULATOR LENS CAP



**INDEPENDENT WHOLESALE WELDING SUPPLY**

Ph: 02 8834 2400 Fax: 02 8834 2498 Email: [iwws@iwws.net](mailto:iwws@iwws.net) Website: [www.iwws.net](http://www.iwws.net)