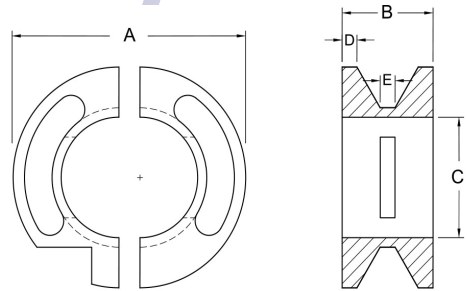




TACK CLAMP



SIZE	A	B	C	D	E
.25	1.89	1.25	.25	.15	.50
.50	1.89	1.25	.50	.15	.50
.75	2.15	1.25	.75	.15	.50
1.00	2.40	1.25	1.00	.15	.50
1.50	2.95	1.41	1.50	.23	.50
2.00	3.60	1.57	2.00	.25	.50
2.50	4.20	1.75	2.50	.27	.50
3.00	4.90	1.75	3.00	.27	.50
4.00	6.10	1.88	4.00	.31	.50
6.00	8.75	2.36	6.00	.39	.50

The essential tool to reduce costs and increase quality and profitability on sanitary stainless steel tube welding projects. Features stainless steel construction and available in sizes 1/4"OD through 6"OD.

Strong design allows the rounding of tubing. V-Groove design allows precise TIG tacking. The clamps can be used in multiples to run long lengths of tubing. Also features a hinged design for quick setup.

The number one advantage for using Sanitary Tack Clamps in sanitary welding is the ability to complete a spool in place or on the bench with a single continuous purge.



TSTCKIT1-4
Tack clamp tube 1-4" (25 - 100 mm)

- TSTC375** Tack clamp tube 3/8" (9.5 mm)
- TSTC500** Tack clamp tube 1/2" (12 mm)
- TSTC750** Tack clamp tube 3/4" (19 mm)
- TSTC1** Tack clamp tube 1" (25 mm)
- TSTC1500** Tack clamp tube 1.5" (38 mm)
- TSTC2** Tack clamp tube 2" (50 mm)
- TSTC2500** Tack clamp tube 2.5" (63 mm)
- TSTC3** Tack clamp tube 3" (75 mm)
- TSTC4** Tack clamp tube 4" (100 mm)
- TSTC6** Tack clamp tube 6" (150 mm)



INDEPENDENT WHOLESALE WELDING SUPPLY

Ph: 02 8834 2400 Email: iwws@iwws.net Website: www.iwws.net