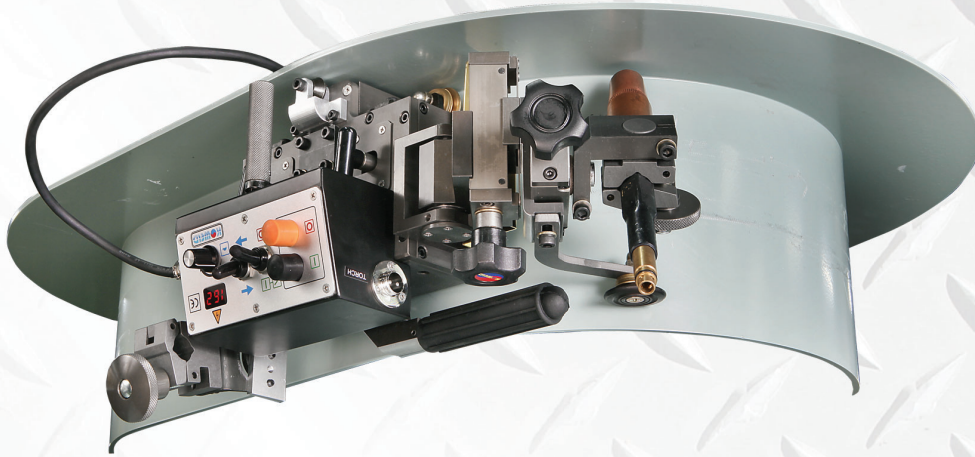
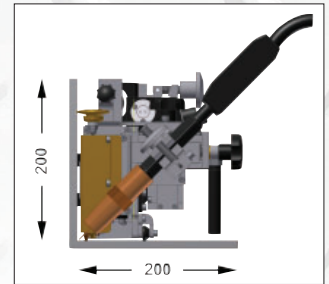
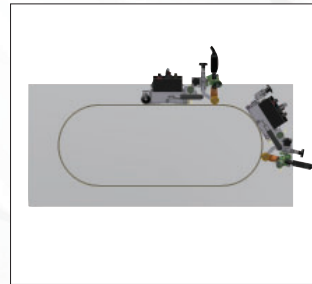
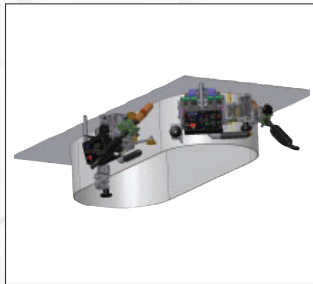
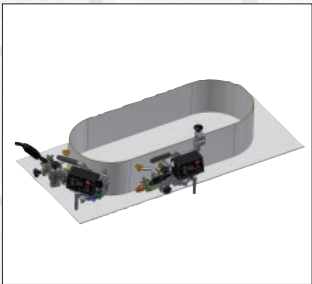


ROUND, OVAL, STRAIGHT FILLET CARRIAGE



- Overhead and down position welder for round, oval and straight coaming.
- Useful for manholes, hatches, door frames, pipe flange and penetrating piece.
- Requires minimum height of 200 mm and minimum diameter of 400 mm.
- Automatic tension device offers constant distance between torch and parent materials.
- Minimised gear backlash offers a constant speed/adjustable controls.
- Special motor with a reducer ensures quality welding and long life.



Composition	Item	Specification
General	Model	CS-71T
	Dimension	398 (W) x 206 (L) x 208 (H)
Body Part	Weight	6.8 kg
	Travel Speed	0~196 cm/min
	Driver Method	4 wheels-chain-driver motor
	Input Voltage	AC 110V-230V 50Hz / 60Hz
	Traction Power	10 kg
Torch Adjustment	Up/Down Angle	45° ±10°
	Front/Back Distance	0 ~ 40 mm
	Up/Down Distance	0 ~ 40 mm
	Running Angle	±5°