

# ZEPHYR HELMET



## #W000271201 COMPLETE ZEPHYR ADV 4000 HELMET

With the Zephyr solution, you will find in a rugged transport bag:

- The Zephyr 4000 helmet
- The Zephyr air flow system
- A protected hose insuring the connection
- A shoulder strap
- A battery charger
- A flow-meter
- One extra filter.

### Advance 4000 ADF 4/9-13

The top-of-the-range solution for any application:

4 adjustment modes from an LCD screen with digital keys:

- Welding: variable shades 4/9-13, 4 optical sensors, regulation of the sensitivity and of the return to a clear shade.
- Grinding: activation of the filter in clear shade level 4.
- Cutting, low current welding: adjustable shades 5 to 9 for TIG process low intensity, microplasma, oxyacetylenic welding...
- "X mode": adjustable shade 4\*9-13 with magnetic sensors for outside or obscured arc welding...



### The Zephyr Helmet

Insures you higher comfort and protection with a new high performance liquid crystal cell, an extra-wide vision and extreme reliability.

ADF and protection plate are easy extractable with a pressure on the push button. Adjustable head gear (4 positions), optimized design to insure a good covering of the head, and a light weight.



	Advance 4000 V4/9-13 ADF
Optical class	1/3/1
Switching time ligh-dark	0.0005 second
Switching time dark-ligh	Adjustable between 0.1 and 1 sec
Sensitivity adjustment	10 positions per digital keys
Sensors	4 independent optical sensors turning magnetic in "X mode"
Viewing area	97 x 60mm
Light Shade	Shade 4
Dark shade	Adjustable with digital key from 9 to 13
Grinding mode	Yes - shade 4
Cutting/flame welding mode	Yes - shade 5 to 9
Constant protection UV/IR	Yes
Power supply	Lithium CR2450 3 Volt batteries
Solar cells	Yes
Working temperature	-5°C to +55°C
Storing temperature	-30°C to +70°C
Eyes protection standard	CE EN 379






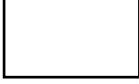

### Flow circulation

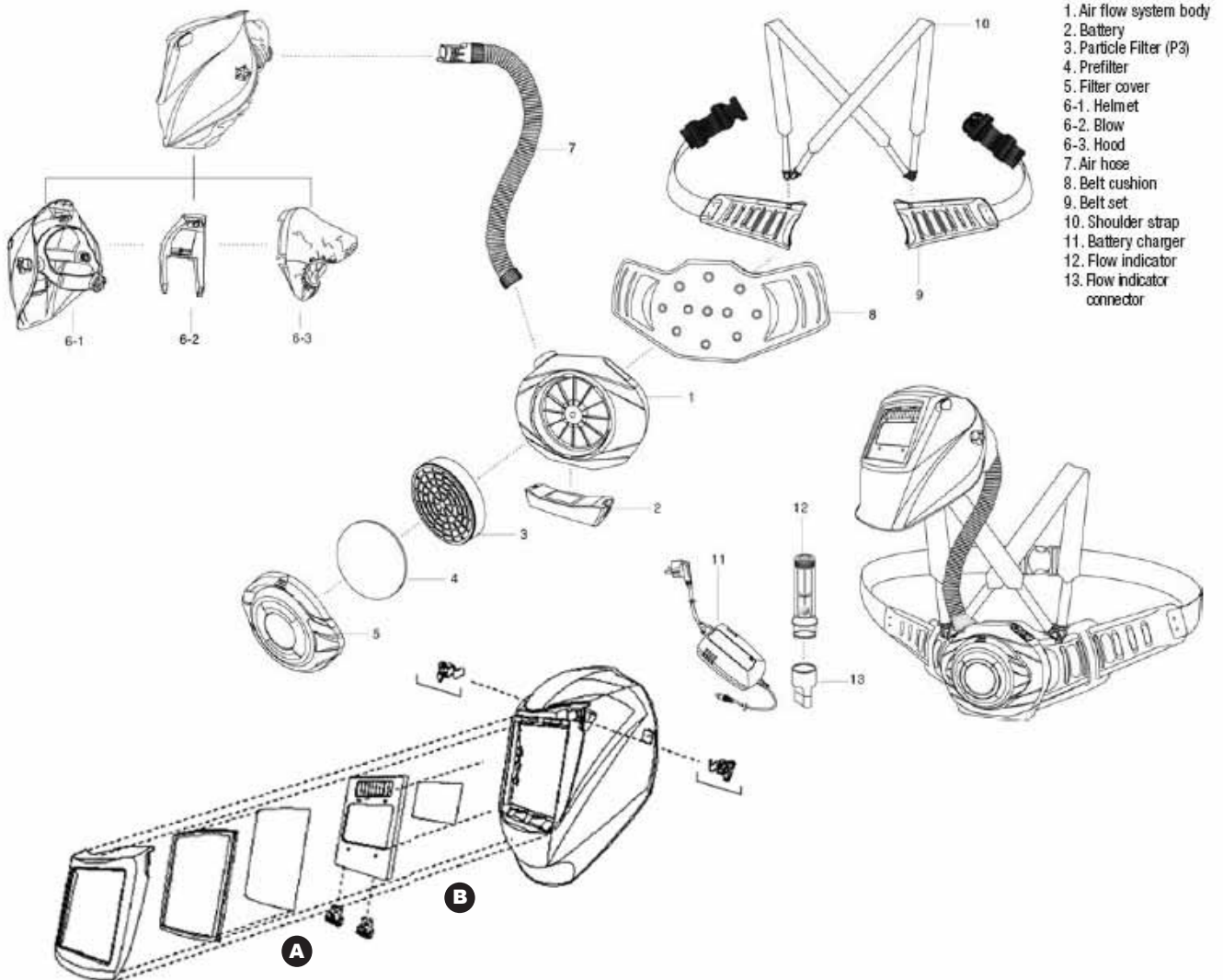
You can choose between:

- A top down air flow, coming from the top of the helmet (1)
  - Or a lateral flow coming from each side at the mouth level (2)
  - Or a mix of the two solutions.
- For best supply and greatest comfort

# ZEPHYR HELMET

Category	Category name	Part Number
	Prefilter Z #4	W000271207
	Particle filter #3	W000271208
	Battery #2	W000271210

Category	Category name	Part Number
	Front Lens #A	W000261993
	Inside Cover #B	W000261994



## The ZEPHYR air flow system

- Air flow system: 2 flows rates (low 160 l/min and high 200 l/min).
- This equipment includes an indication of the flow chosen, and indication of the battery charge, and two alarms in case of flow insufficiency: **a tone and a vibration**. This is important for the welder who is often in a noisy environment. A specific system sends the tone through the hose to bring the sound to the welder. The belt as well as the shoulder strap are made in flame retardant material, a big advantage also.
- The belt includes a cushion insuring a good level of comfort.
- Disconnecting the battery is easy with only one button to push. It is a lithium battery with a 8-hour lifetime duration. A stronger one can be put in place for special cases with 14-hour duration. No need to fully discharge the Li-Ion battery before recharging it.
- Opening the filter is also easy with a quarter left turn, two symbols indicate if its locked or open, the indications are also written indicating the positions.



- Inside, 3 kinds of filters can be included.
    - One pre filter against the biggest particles
    - One particle filter against the dust (> 0.3 micron)
    - One carbon filter against the fume odour.
- The whole system is water proofed.



## Hose connection and hose cap

The connection between the flow system and the helmet is made through a hose. The connection with the air flow system is water proofed. With the helmet, it is a quick connection allowing good flexibility when the welder turns the head. The hose is protected with an outer covering (75% cotton, 25% kevlar).