



TIGMASTER®

WATER RECIRCULATOR

High Efficiency Radiator Circulator System

Part Number	Description
TM115WC	Water Recirculator - 110V
TM240WC	Water Recirculator - 240V

BLUE COOLANT

For maximum equipment performance, always use our special coolant formula instead of ordinary tap water.

Part Number	Description
16-25501	Blue Coolant for MIG, TIG, resistance welding and general industrial applications



WATER RECIRCULATOR - PRODUCT INFORMATION

Water Recirculators - High Efficiency Radiator Circulator System

Don't risk the care of expensive water cooled equipment to just any cooling circulator. Cool with the TIGMASTER WATER COOLER.

A high efficiency radiator type circulator, the TIGMASTER WATER COOLER is designed for many industrial cooling applications including MIG, TIG, Plasma, and resistance welding. It's unique common shaft construction virtually eliminates pump, fan, or motor alignment problems and ensures quiet operation.

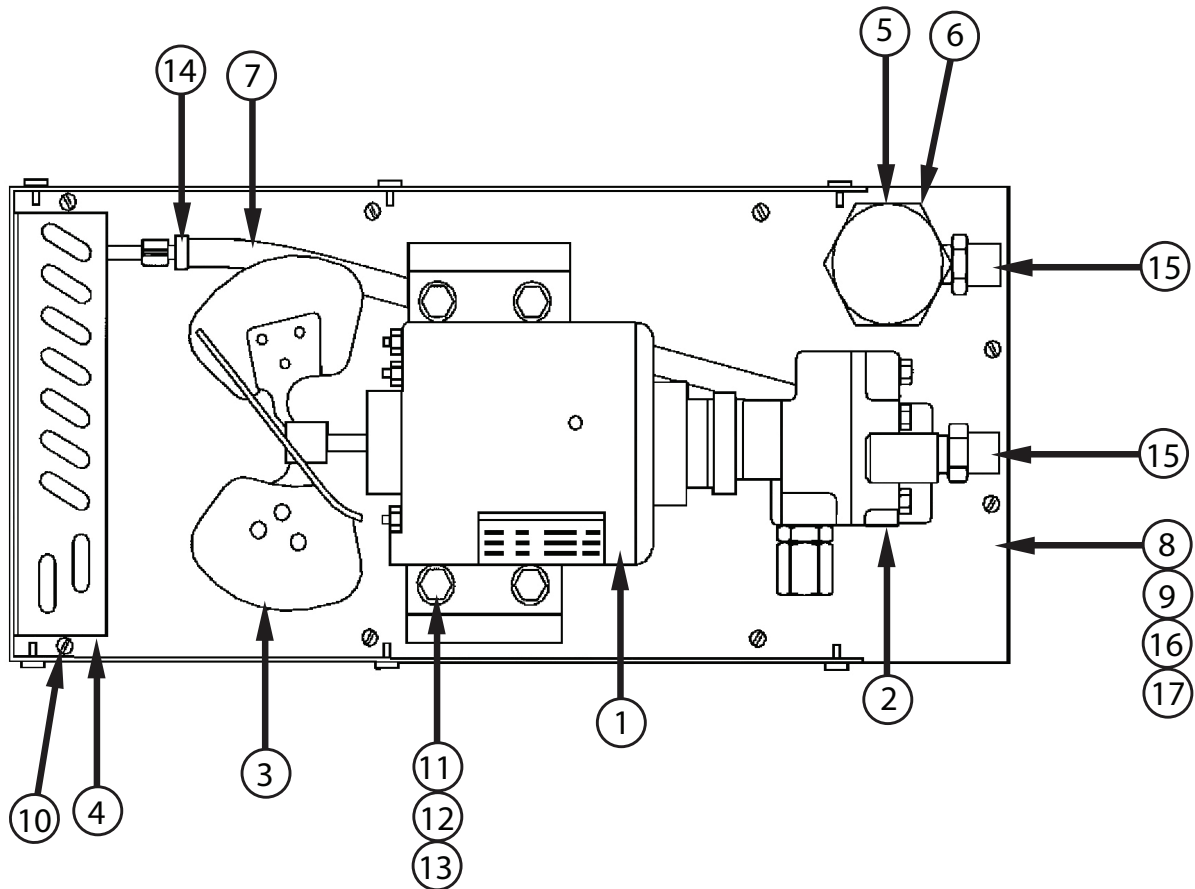
All stainless steel tank and cover prevents electrolytic and chemical contamination to give

longer equipment life and better operating performance. The TIGMASTER WATER COOLER can function in either stationary or portable installations, and it's distinctive design requires a minimum of space.

FEATURES:

- High efficiency radiator type recirculator.
- Common shaft construction eliminates alignment problems.
- Designed for easy use and maintenance.
- All stainless steel.
- Geared Pump

WATER RECIRCULATOR



Part Number	Description
C2.51G	Cooler with Gear Pump 115V 50/60 Hz
C2.5-2G	Cooler with Gear Pump 230V 50/60 Hz
1	C3000 Electric Motor 1/3 HP 115/230V 50/60 Hz
2	C1110 Rotary Gear Pump
N/S	C11969 Rotary Gear Pump Repair Kit
3	C3075 Fan
4	C0900 Radiator Coil Unit
5	C1500 Filler Port Assembly
6	C1501 Filler Port Cap
7	C0904 Pick Up Hose
8	C0901 Sub Plate
9	C0905 Stainless Steel Tank
10	C1000 Sheet Metal Screw (20 Pack)
11	C1001 Hex Bolt
12	C1003 Flat Washer
13	C1004 Nut
14	C0903 Stainless Steel Hose Clamp (3 Pack)
15	C1005 Water Adaptor
16	C1006 Tank Gasket
17	C1007 Tank Feet Pads (4 Pack)
N/S	C1012 Plastic Parts Storage Box
N/S	C1008 Strainer - Pick Up Hose
N/S	C1009 Cord Relief
N/S	C1010 Power Cord & Plug 115 Volt - 60 Hz
N/S	C0902 Stainless Steel Cover
N/S	C1011 Hose Barb (2 Pack)
N/S	C0904 Bypass Hose (Gear Pump Only)

PUMP SPECIFICATIONS & CAPACITY

Factory pressure setting 50 PSI, adjustable 2-100 PSI
 Built in bypass to tank (gear pump only).
Output: 6.435 Litres per minute @ 50 PSI
Dimension: 18" (L) x 9 1/4" (W) x 14 1/2" (H)
Weight: 15.45 Kgs
Shipping: 16.36 Kgs
Standard: 5/8-18 LH Water Adaptor
Capacity: (2 GAL) 7.5

MODEL DATA

Model	Motor Input Voltage	Amperes Input Full Load	Phase	Frequency (HZ)	Coolant Tank Capacity
TM115WC	115V	5.6	Single	50/60	7.57
TM240WC	230V	2.8	Single	50/60	Litres