



TIGMASTER®

MICRO TIG WELDING TORCHES

Weldtec® offers the most advanced micro welding TIG torches on the market... and now, flexible* neck models, both air cooled and water cooled.

When the Weldtec® design team introduced the micro torch to the market 25 years ago it first appeared as a 50 amp air cooled model. To meet the needs to today's welding challenges they reintroduced two new models, a 125 amp water cooled model and a 60 amp air cooled model. Both models share chucks and clear glass nozzles. They can be fitted with 45°, 90°, 180° or 45°/90° combo chucks (.04, 1/16) and clear glass nozzles to handle the most difficult welding applications.

The standard torch neck length is 3-1/2 inches, the flexible neck model is 5 inches long. The standard non-flex models can be special made with a neck length as short as 2 inches to as long as 12 inches.

Access to difficult weld locations was never easier.

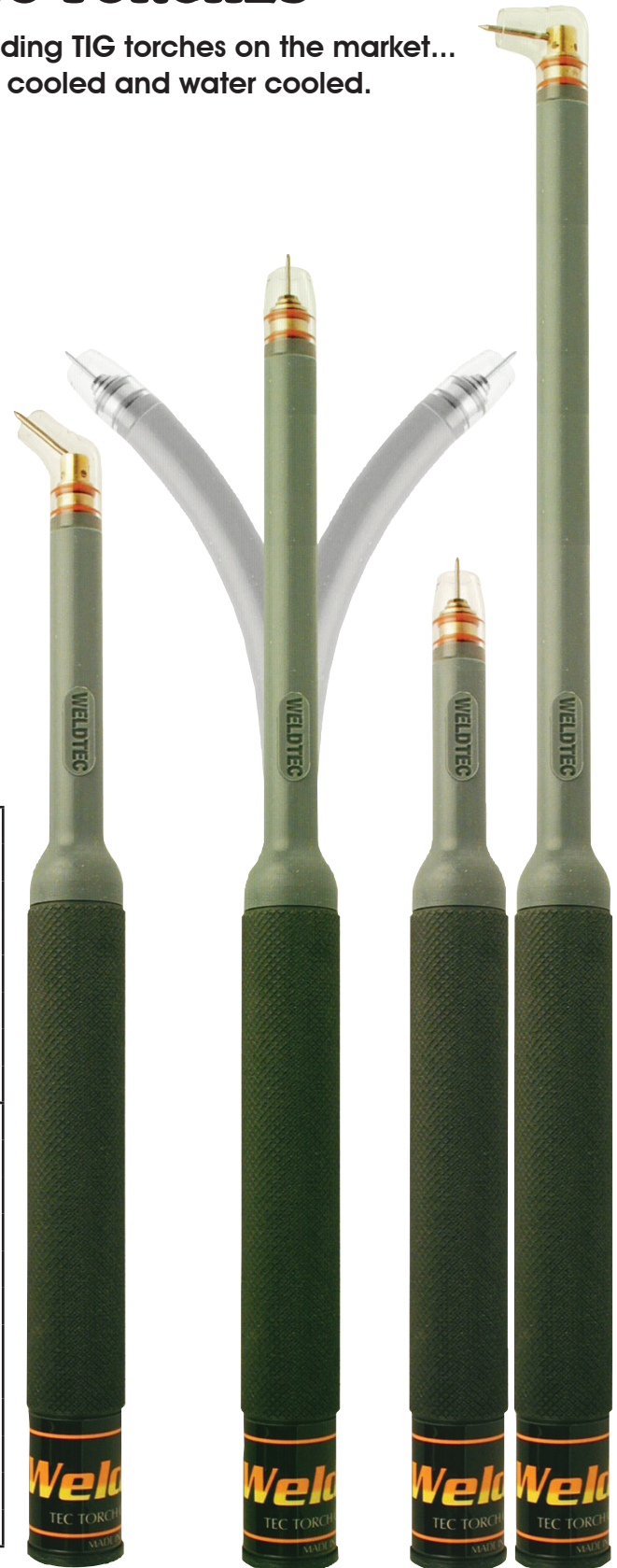
- Low profile design for access to tight locations.
- Flexible neck models.
- Interchangeable chucks and nozzles.
- Clear glass nozzles for better visibility.
- Low maintenance dual o-ring head design.
- Flexible - soft rubber hose and power cable options.
- Glove soft leather protective cable cover on DX models.

WT60-12	12 1/2 ft.	Torch Package - Vinyl	Standard Model	60 Amps Air cooled
WT60-25	25 ft.	Torch Package - Vinyl		
WT60-12SF	12 1/2 ft.	Torch Package - Super Flex		
WT60-25SF	25 ft.	Torch Package - Super Flex		
WT60F-12	12 1/2 ft.	Torch Package - Vinyl	Flex Neck Model	60 Amps Air cooled
WT60F-25	25 ft.	Torch Package - Vinyl		
WT60F-12SF	12 1/2 ft.	Torch Package - Super Flex		
WT60F-25SF	25 ft.	Torch Package - Super Flex		
WT125-12	12 1/2 ft.	Torch Package - Vinyl	Standard Model	125 Amps Water Cooled
WT125-25	25 ft.	Torch Package - Vinyl		
WT125-12R	12 1/2 ft.	Torch Package - Super Flex		
WT125-25R	25 ft.	Torch Package - Super Flex		
WT125-12DX	12 1/2 ft.	Torch Package - Deluxe		
WT125-25DX	25 ft.	Torch Package - Deluxe		
WT125F-12	12 1/2 ft.	Torch Package - Vinyl	Flex Neck Model	125 Amps Water Cooled
WT125F-25	25 ft.	Torch Package - Vinyl		
WT125F-12R	12 1/2 ft.	Torch Package - Super Flex		
WT125F-25R	25 ft.	Torch Package - Super Flex		
WT125F-12DX	12 1/2 ft.	Torch Package - Deluxe		
WT125F-25DX	25 ft.	Torch Package - Deluxe		

Standard: Vinyl - PVC plastic tubing.

Optional: Super Flex - soft over braided rubber tubing.

Deluxe: Soft over braided rubber tubing, leather cover, 1/16 combo chuck and 45 deg. nozzle.



Standard
3 1/2"

Flex Neck
5"

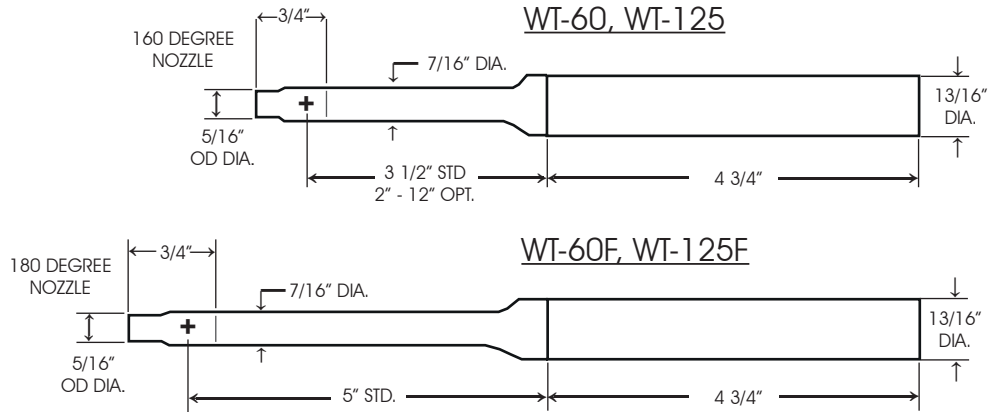
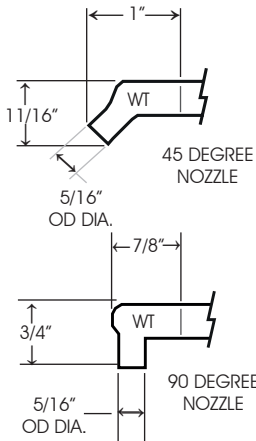
Specials
2"-12"

INDEPENDENT WHOLESALE WELDING SUPPLY

Ph: 02 8834 2400 Fax: 02 8834 2498 Email: iwws@iwws.net Website: www.iwws.net

MICRO TIG WELDING TORCHES

WT-60, 60F, 125, 125F



SPECIFICATIONS

	WT-60, 60F	WT-125, 125F
Maximum Amperage Capacity	60 AMPS	125 AMPS
Tungsten Size Capacity	.040-1/16 (1.0-2.4)	.040- 3/32 (1.0-2.4)
Cooling Requirements	-	1Qt./Min (.964L/Min.)
Maximum Coolant Pressure	-	50 psi (345 kpa)

TUNGSTEN ELECTRODE LENGTHS

Angle	Std.		Min.		Max.	
	in.	mm	in.	mm	in.	mm
90°	.866	22	.787	20	.866	22
45°	.866	22	.866	22	.945	24
180°	.866	22	.748	19	1.182	30

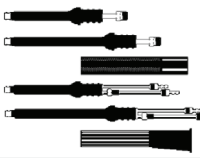
GLASS NOZZLES

TORCH	LENGTH	ORIFICE IN	ORIFICE mm	SIZE	PART NO.
WT-60, 60F, 125, 125F	1"	1/4	6	4	125N45
WT-60, 60F, 125, 125F	7/8"	1/4	6	4	125N90
WT-60, 60F, 125, 125F	3/4"	1/4	6	4	125N180



CHUCKS

TORCH	ELECTRODE ANGLE	SIZE IN	SIZE mm	PART NO.
WT-60, 60F, 125, 125F	45 & 90 deg. Combo	.040 1/16	1,0 1,6	125C40C 125C116C
	45 deg. Chuck	3/32	2,4	125C332-45
	90 deg. Chuck	3/32	2,4	125c332-90
WT-60, 60F, 125, 125F	180 deg. Straight	.020	0,5	125C20
		.040	1,0	125C40
		1/16	1,6	125C116
		3/32	2,4	125C332

REPLACEMENT PARTS

TORCH	DESCRIPTION	PART NO.
	Torch Body	WT-60
	Torch Body	WT-60F
	Handle	H-100
	Torch Body	WT-125
	Torch Body Handle	WT-125F H-100B
WT-60, 60F, 125, 125F	Chuck Wrench (Use with 180 deg, chuck)	53N20
WT-60, 60F, 125, 125F	Torch Body O-Ring (2 Required) (included on torch body)	98W77

POWER CABLE ADAPTERS

ADAPTERS	TORCH	PART NO.
 105Z57 45V11	WT-60, 60F WT-125, 125F	105Z57 45V11
 3538 3538GT 3538W 3538W-GT	WT-60, 60F	3538 3538GT
	WT-125, 125F	3578W 3578W-GT

ACCESSORY KITS

TORCH	DESCRIPTION	PART NO.
WT-60, 60F	Accessory Kit - .040 Parts	AK-60
WT-125, 125F	Accessory Kit - 1/16 Parts	AK-125

Note: Specifications and dimensions are subject to change without notice.

ACCESSORY KITS

AK-60 Accessory Kit

For WT-60, 60F Air Cooled Torches

- Includes:
- | | | |
|-------|----------|-------------------------|
| 1 Ea. | 125C40C | .040 Combo Chuck |
| 1 Ea. | 125C40 | .040 Chuck |
| 1 Ea. | 125N45 | 45 Degree Glass Nozzle |
| 1 Ea. | 125N90 | 90 Degree Glass Nozzle |
| 1 Ea. | 125N180 | 180 Degree Glass Nozzle |
| 1 Ea. | 53N20 | Chuck Wrench |
| 1 Ea. | .040 x 2 | Tungsten Electrode |
| 1 Ea. | | Parts Storage Box |



125N45
45 Degree
Glass Nozzle



125N90
90 Degree
Glass Nozzle



125C40C
.040 Combo Chuck
(45 & 90 Degree)



53N20
Chuck Wrench
With Electrode Stop
(Use with 180 Degree Chuck)



125N180
180 Degree
Glass Nozzle



125C40
.040 Chuck
(180 Degree)

.040 x 2
Tungsten Electrode

AK-125 Accessory Kit

For WT-125, 125F Water Cooled Torches

- Includes:
- | | | |
|-------|----------|-------------------------|
| 1 Ea. | 125C116C | 1/16 Combo Chuck |
| 1 Ea. | 125C116 | 1/16 Chuck |
| 1 Ea. | 125N45 | 45 Degree Glass Nozzle |
| 1 Ea. | 125N90 | 90 Degree Glass Nozzle |
| 1 Ea. | 125N180 | 180 Degree Glass Nozzle |
| 1 Ea. | 53N20 | Chuck Wrench |
| 1 Ea. | 1/16 x 2 | Tungsten Electrode |
| 1 Ea. | | Parts Storage Box |



125N45
45 Degree
Glass Nozzle



125N90
90 Degree
Glass Nozzle



125C116C
1/16 Combo Chuck
(45 & 90 Degree)



53N20
Chuck Wrench
With Electrode Stop
(Use with 180 Degree Chuck)



125N180
180 Degree
Glass Nozzle



125C116
1/16 Chuck
(180 Degree)

1/16 x 2
Tungsten Electrode