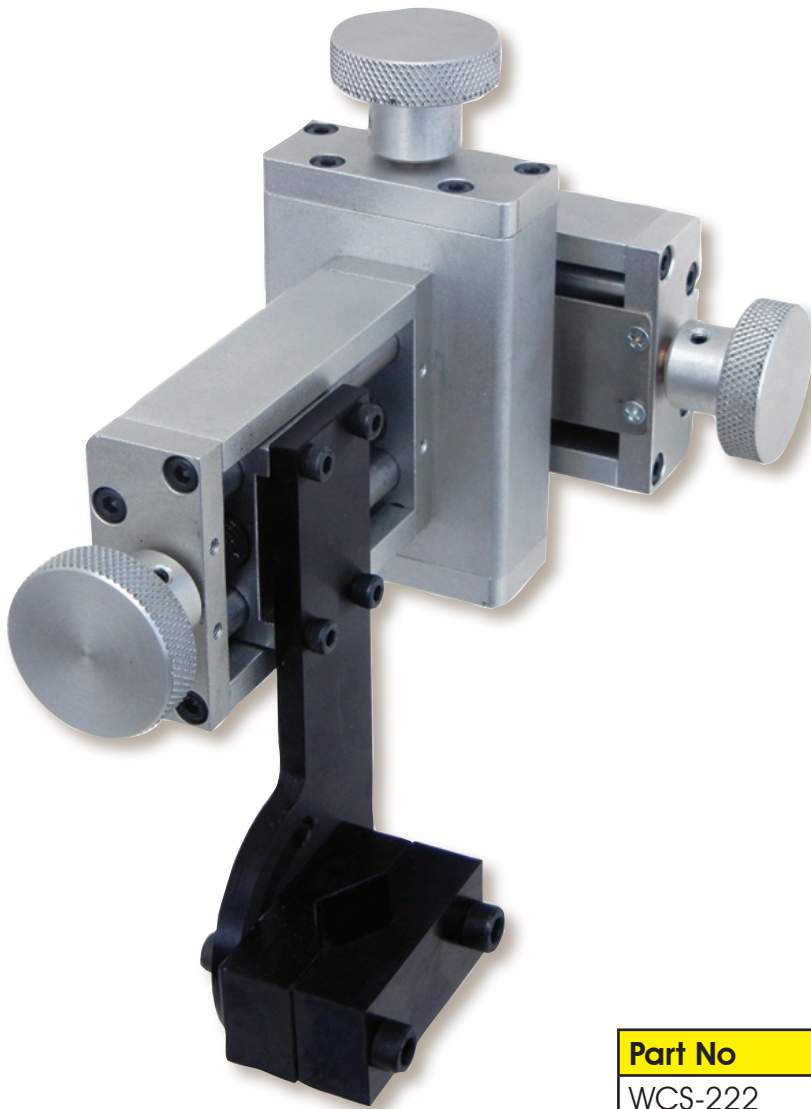




# PROFAK

## WCS-222

### 3-Way Torch Adjustment Slide with Torch Angle Adjustment



#### Specifications:

- **LxWxH Adjustment:**  
34mm x 34mm x 34mm  
(1-3/8" x 1-3/8" x 1-3/4")
- **Slide Adjustment:**  
Manual Hand Wheel
- **Torch Angle Adjustment:**  
90 Degree
- **Torch Diameter:**  
15mm - 34mm (5/8" - 1-3/8")
- **Torch Clamp:**  
V-Block
- **Load Capacity:**  
4.5kg (10 lbs)
- **Easy Mounting:**  
4 Drilled & Tapped Holes
- **Weight:**  
1.5kg (3.5 lbs)

Part No	Description
WCS-222	3 - Way Adjustment Slide